

THE HOMES MAGAZINE FOR MODERN LIVING

Livingetc

February 2021 ₹150

INDIA EDITION

SLOW
Travel & Food



MUSELAB IN ALIBAUG
SUMESSH MENON IN
MUMBAI

PARAMETRIC DESIGN
ZEDLAB IN NCR

SOUNAK SEN BARAT
FASHION TO INTERIORS

**SOFT
FURNISHINGS**

THE ESSENCE OF YOUR HOME

DESIGN PROFILE: RAHUL KADRI

Set in stone

HOME PROFILE

THE OWNER The Jalans are in the marble business, and well versed with trends in the architecture and design industry.

THE PROPERTY The 2,300 sq ft apartment is located in a brand new building in Mumbai's upscale Khar (W) suburb. It features a spacious living room flanked by two, almost identical, wings. These comprise of three bedrooms, a kitchen, a dining area, a *mandir* and a spacious deck attached to the living room. The views of the city are a wonderful bonus.



DINING AREA

The dining area is made distinctive by the South American onyx table-top and the barcode-like calibration of the silver travertine backdrop.

GET THE LOOK The stunning blown-glass chandelier has been customised by Hive Home, while the tan leathers chairs, again bespoke, are by Alsorg.

A monochromatic colour scheme and a rich material palette create a striking interior for the Jalan family in Mumbai

Words / Rupali Sebastian * Photography / Prashant Bhat



Sumesh Menon's fascination with marble finds full expression in the home he has designed for the Jalans. "I love using marble in my projects. And it's not just the material that fascinates me... it's the entire process of selection, going to places such as Silvassa where you can see the entire uncut blocks. And then figuring out the best way to use it — whether to bookmatch it, or give it some texture..." The designer, who has made a name for himself with his distinctive spatial narratives (especially in the hospitality industry), reveals that he has freely indulged this interest in one of his recently completed projects, the Jalan residence — a home for a business family engaged in... the marble industry!

The family knew Menon both professionally and socially, liked his style and were quite sure that they wanted him to design their new home. Their brief was simple: a functional home that conformed to the basic tenets of Vaastu lines. The rest was left to Sumesh's creative inclination.

"The site was a bare shell, a 2,300 sq ft apartment in a new building in Mumbai's western suburbs. The focal point is the large living room that spills onto a deck. The views from there are quite beautiful," says Menon, founder of Sumesh Menon Associates. The interior design exercise took full advantage of this feature while keeping the family's lifestyle and Vaastu elements in mind. The living and dining areas were clubbed together, a mandir room was carved out near the entrance, orientations of the bathrooms were altered and bedrooms were made smaller to accommodate walk-in wardrobes.

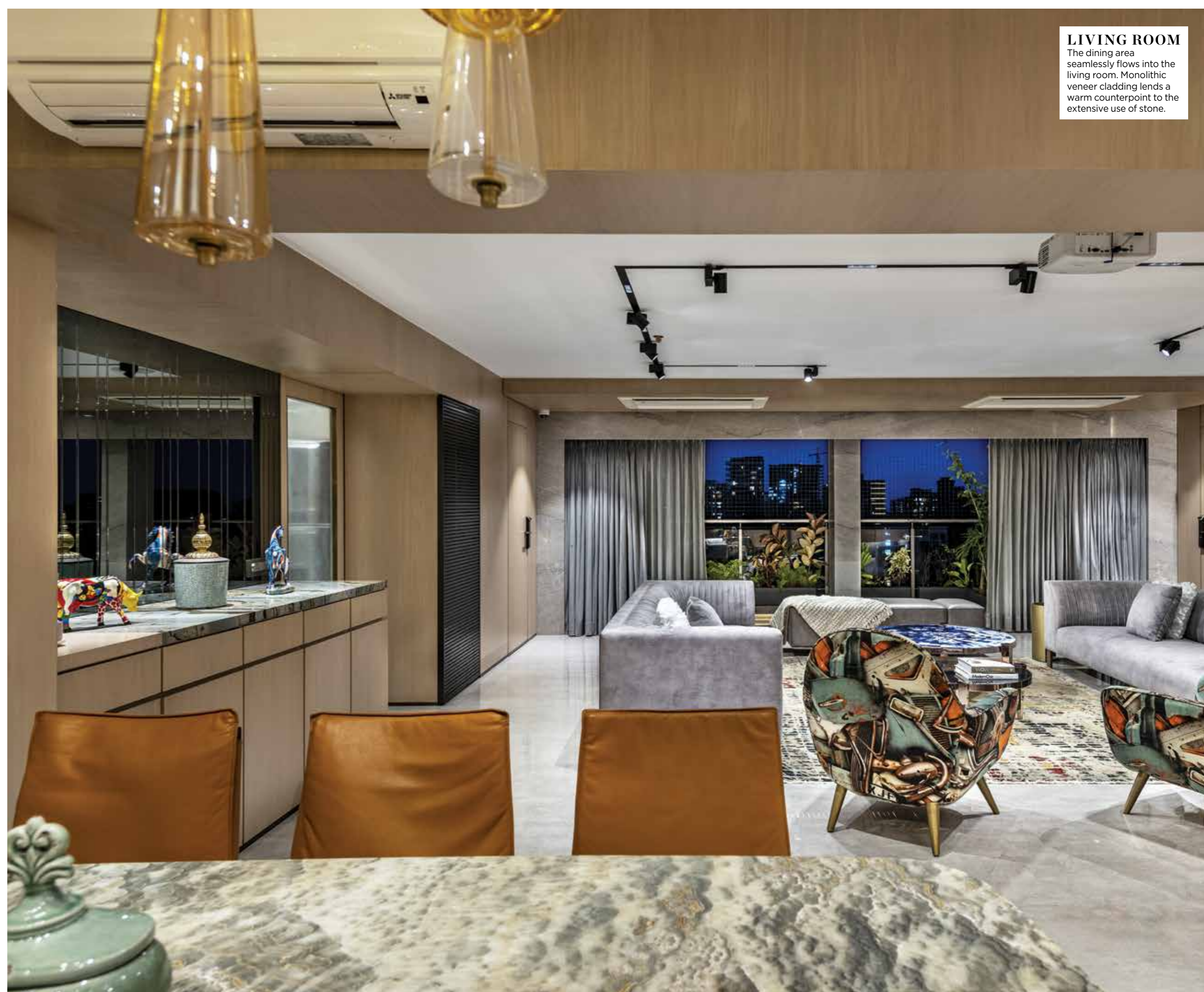
When it came to materials, the designer, of course, was pleased as punch — all he had to do was point to the best marble! "So discerning were the clients that they didn't hesitate to pick up a rare or exotic piece from a competitor. That was quite a talking point in the industry," laughs Sumesh. However, despite having access to a wide spectrum of stones, he chose to exercise restraint and opted for a grey scheme, featuring marble varieties such as Grey Flurry, Grey Versailles and Grey Oracle. "The clients did wonder about the monochromatic scheme — that was the only point of discussion," discloses Sumesh. "But in the end, they had faith in me, and everything ended well..."

Marble, timber veneers and other stones play dominant and supporting roles in creating visual compositions that are minimal but never austere. In a few instances, the spaces have been highlighted by finishing techniques such as a calibrated water-jet on silver travertine in the dining area that mimics the graphic rhythm of a barcode. A monolithic scheme also allows the beauty of the stones to play out fully. But while a bathroom fully clad in Statuario may seem like something out of a dream, getting the 10' x 8' slabs to the 9th-floor site was a logistical nightmare. "This was the only challenge in the project. We had to hoist them up through the living room deck because the stairwell was too narrow," recalls the designer. "Thankfully, there were no casualties."

Customised furniture by Alsorg, a stunning blown-glass contemporary chandelier by Hive Home, a dining table-top flaunting the beautiful striations of South American onyx, a pair of chairs upholstered in fabric designed by Jean Paul Gaultier... thoughtful design details and a minimal yet striking aesthetic — this residence illustrates the power of few.

LIVING ROOM

The dining area seamlessly flows into the living room. Monolithic veneer cladding lends a warm counterpoint to the extensive use of stone.



LIVING ROOM

The spacious living room is at the heart of the house, and segues into a deck with panoramic city views. The exotic, beautiful and rare Blue Roma marble forms a stunning backdrop to one of the sofas.

GET THE LOOK The two chairs upholstered in fabric by Jean Paul Gaultier elevate the style quotient of this public zone. The rug is from Cocoon Fine Rugs. The Blue Roma marble wall cladding is from Classic Marble Company. On the ceiling, an automated magnetic track light system by Philips offers great versatility in creating different moods and settings.

IDEAS TO STEAL

Marble and veneers together create a fine balance between hard-cold and warm

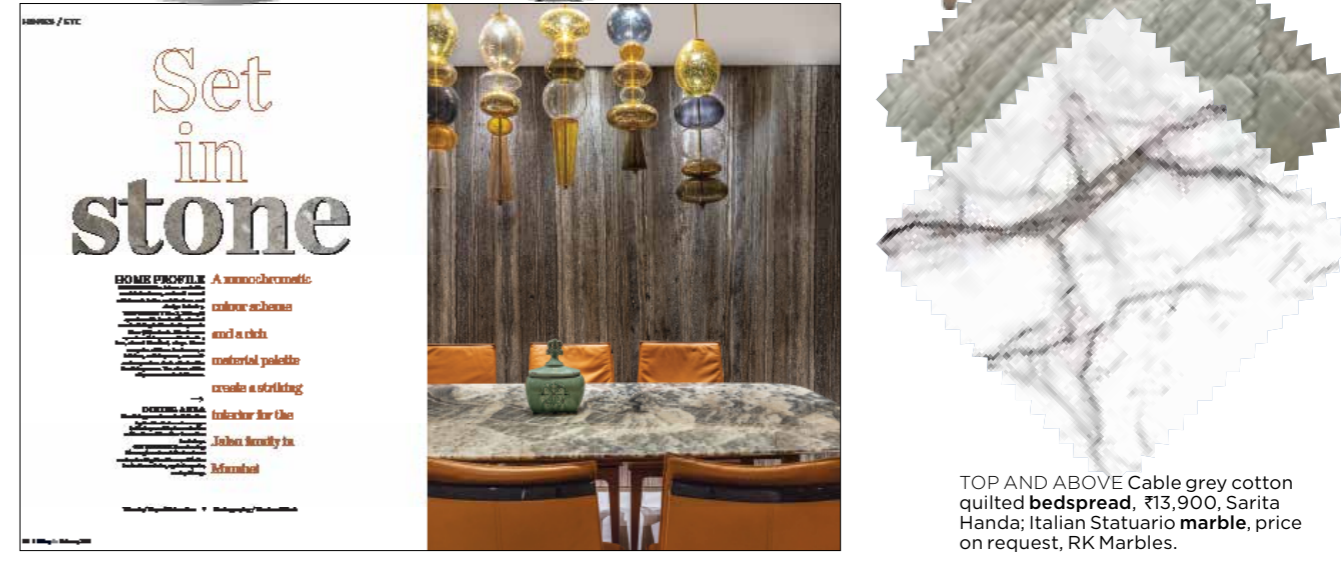


↑ **MASTER BEDROOM**
A neutral palette rules this area of rest and rejuvenation. The room, like the rest of the house, sees Grey Flurry marble on the floor. The tone extends to the grey leather headboard of the bed.
GET THE LOOK While everything in this bedroom is customised, you can check out IDUS in case you are looking for leather beds. For bedlinen that's elegant in its simplicity, check out products from West Elm.

← **MASTER BATHROOM**
Statuario marble's stunning grains set the stage for a bathroom that manages to be striking yet serene at once. The neat segregation of wet and dry areas speaks of pragmatic style.
GET THE LOOK The bespoke countertop with its built-in washbasin is rendered from Kalinga Stone. Fittings and sanitaryware have been sourced from Kohler.



CLOCKWISE FROM LEFT **Rug**, price on request, Jaipur Rugs; La Fila beige velvet **cushion cover**, price on request, Address home; **light**, price on request, Hatsu; **Turkish frame**, price on request, Nupurh J; Athena **planter with stand**, ₹1,695, Thorny Affair at Jaypore; Adelaide **living chair**, price on request, Boconcept; ceramic **dispenser bottle**, ₹1,150, Nestasia; **wc**, price on request, Vitra; Nirlipt **platter with cloche** ₹1,890, FabIndia.



FOR CONTACTS SEE STOCKISTS

Set in stone
HOME PICKFILE A monochromatic colour scheme and a rich material palette create a striking interior for the John Smith in Mumbai



TOP AND ABOVE Cable grey cotton quilted **bedspread**, ₹13,900, Sarita Handa; Italian Statuario **marble**, price on request, RK Marbles.